

NEW CIVIL INFRASTRUCTURE AND PROJECT DEVELOPMENT WORKS UPDATE

June 2023

E ESSENDON
FIELDS

POSITION.
PROXIMITY.
POSSIBILITY.

Construction commencement of civil infrastructure and new warehouse buildings at Essendon Fields.

OVERVIEW

Consistent with the approved 2013 Essendon Fields Master Plan, offices and warehouse facilities are being developed in the north-east section of the Essendon Fields site.

Civil works are due to commence on site, with all works to take place within airport land.

The civil works include bulk earthworks and delivery of sewer, water and electrical infrastructure, including a new basin for stormwater management. Global Avenue will also be extended, which will expand access into the site.

Two new warehouse buildings will be developed within the precinct alongside existing facilities, each to be accessed via the newly created extension to Global Avenue.

PROJECT WORKS

Whilst we deliver these works, you may notice increased activity on the site, including increased noise from construction works.

Measures have been put in place to minimise disruption to local businesses and neighbouring residential properties, including limited working hours, and implementing dust suppression strategies particularly during the initial earthworks.

We will be keeping you informed throughout the project of any specific works that might affect you and have provided information about who to contact with enquiries.

We appreciate your support as we deliver these new facilities, which create new employment opportunities in the Essendon Fields area.



TIMING

Project works are scheduled to commence in June 2023 and complete in June 2024.



LOCATION

The works required will take place at the Eastern end of Global Avenue (refer to plan over page).



SITE WORKING HOURS

Weekdays 7am - 6pm
Saturday 7am - 1pm



SITE ACCESS

Access to the site will be via Global Avenue, which will see an increase in traffic during these works. While road closures are not anticipated, there may be temporary interruptions to traffic on Global Avenue and Challenger Courts, which will be communicated early to affected Essendon Fields tenants.



MANAGING CONSTRUCTION

All projects undertaken at Essendon Fields are undertaken with strict safety and compliance measures, under a detailed Construction Environment Management Plan approved by the Airport Environment Officer, and include plans for:

- public safety, amenity and site security
- operating hours
- noise and vibration controls
- air and dust management
- stormwater and sediment control
- waste and materials reuse
- traffic management (if required), and;
- any conditions of the Planning Permit that applies to the development.



AVIATION INTERFACE

Aviation safety is our first priority at Essendon Fields. All development on site is completed with full regard to the National Airport Safeguarding Framework, aviation impacts assessments, and regulatory approvals.



CONTACT US

If you'd like to speak to our development team please contact:

askme@ef.com.au | +61 3 9948 9400

Essendon Fields Business Tenants please contact your Property Manager.

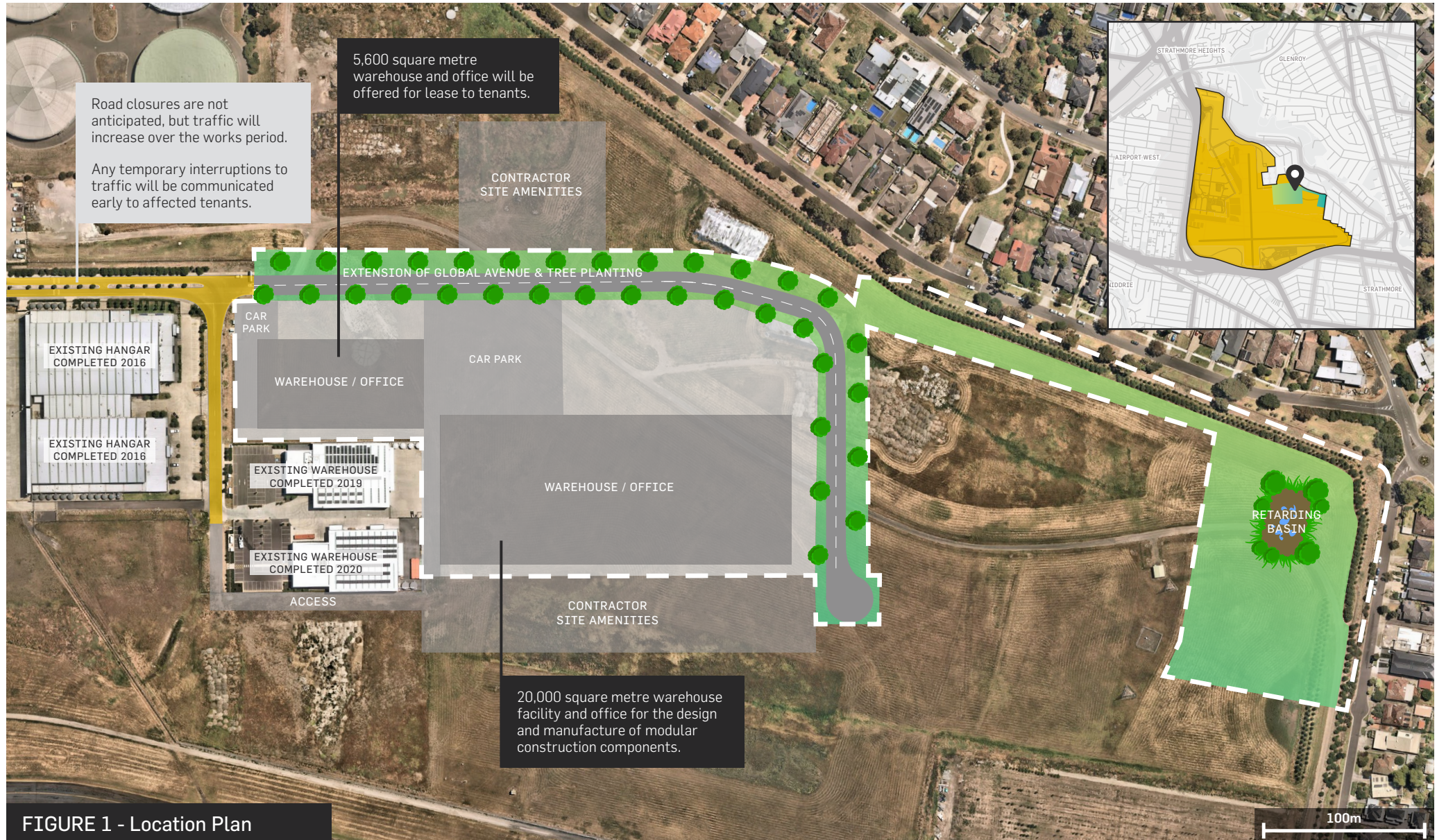


FIGURE 1 - Location Plan